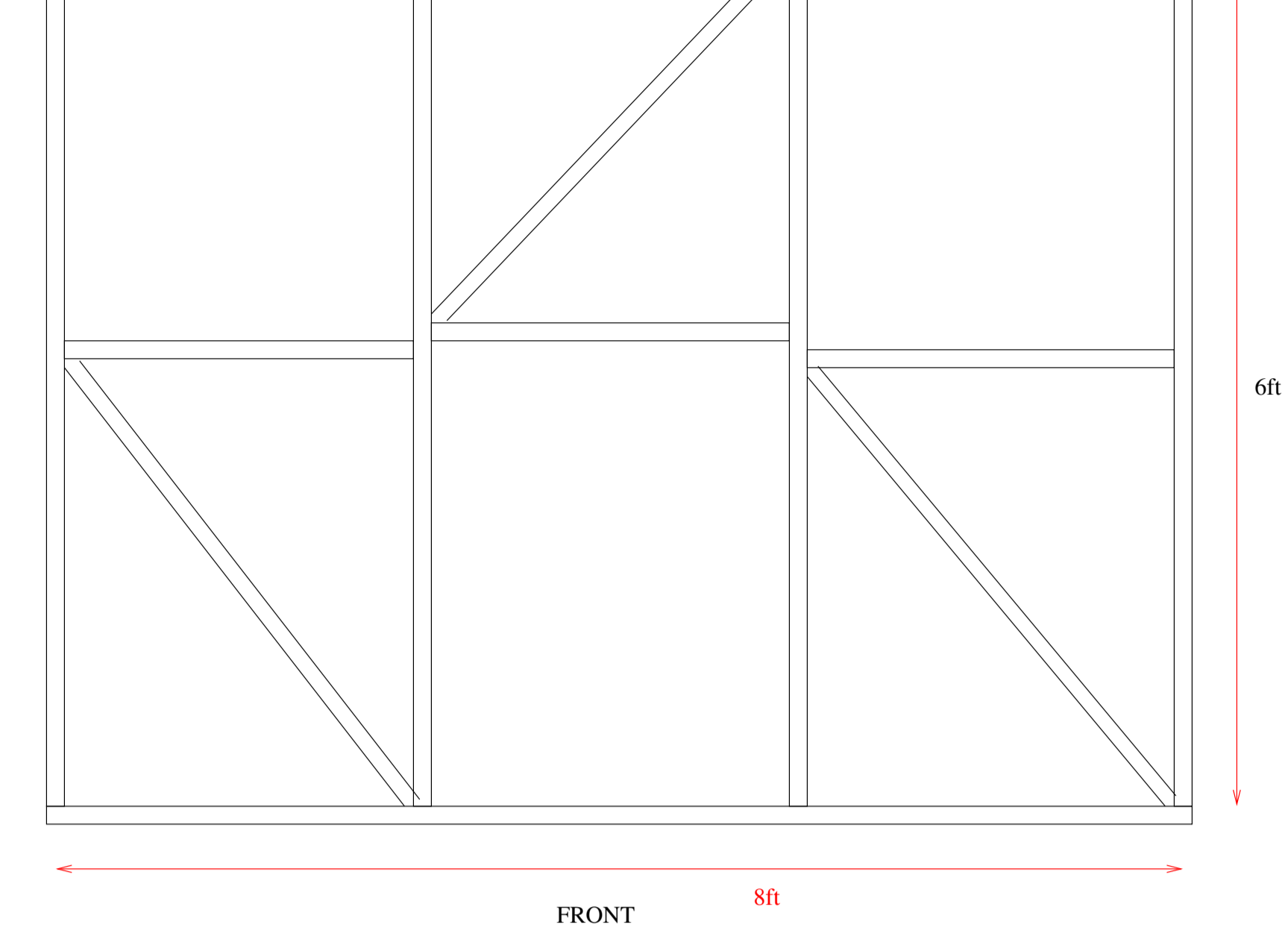
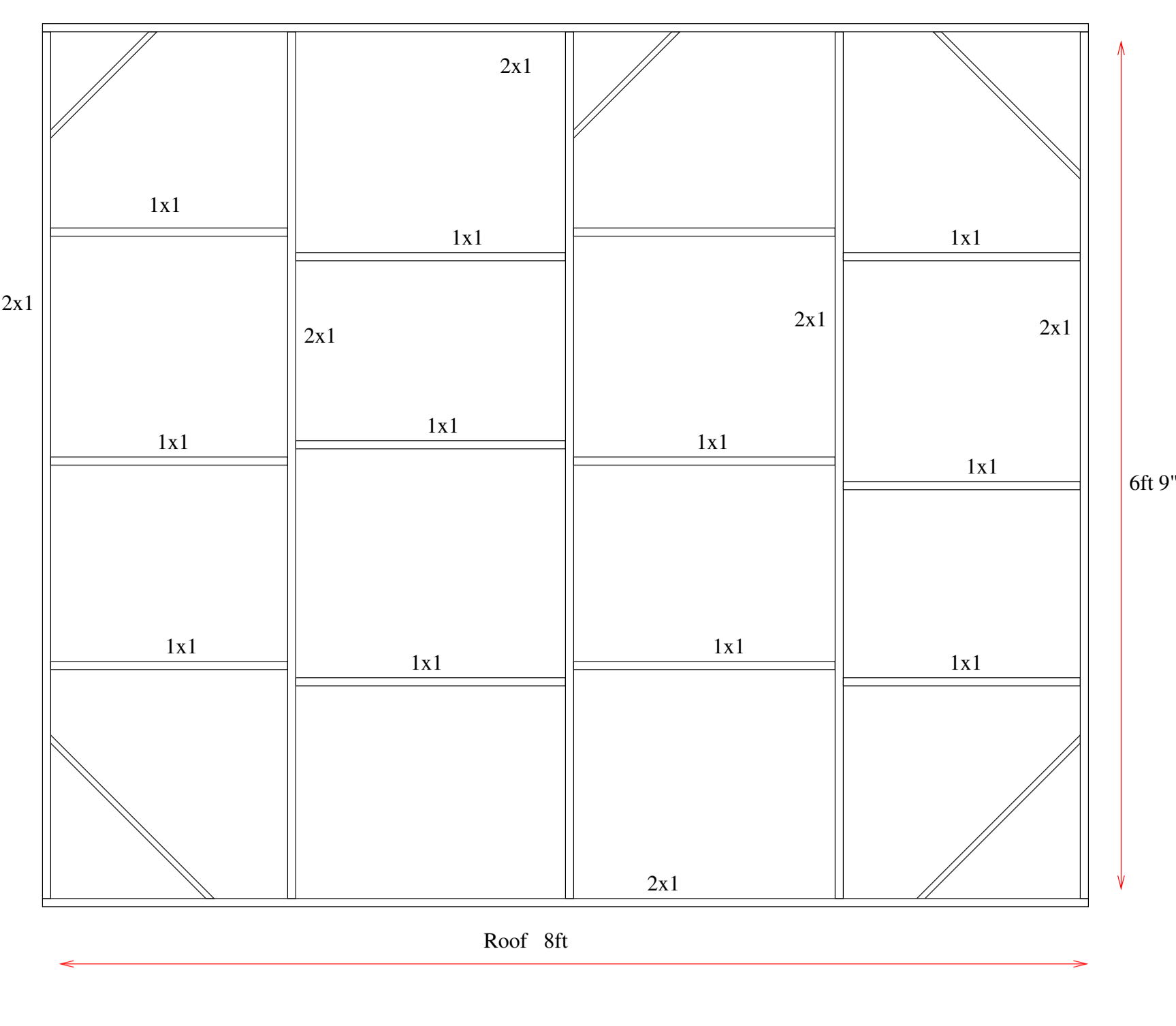
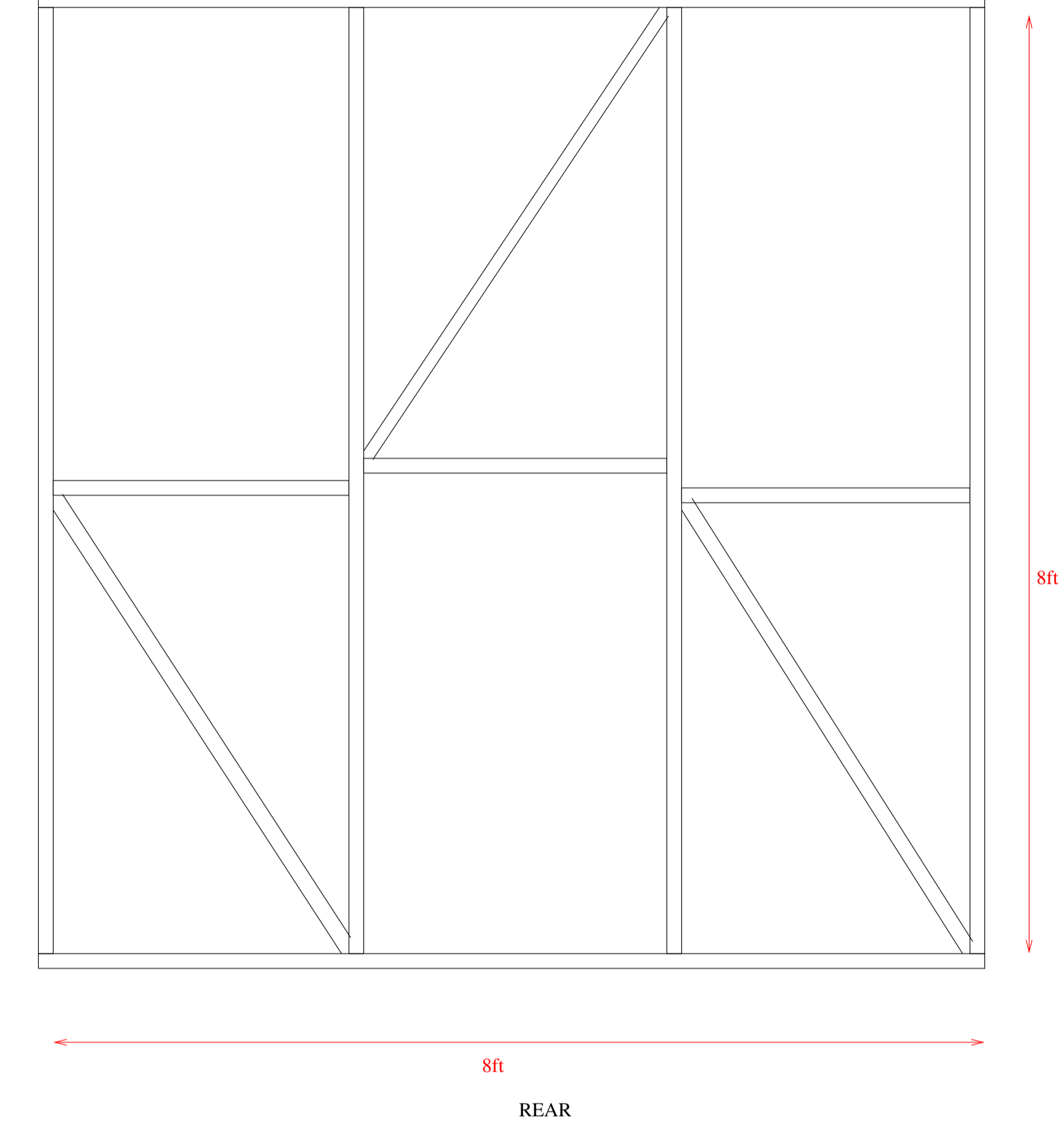


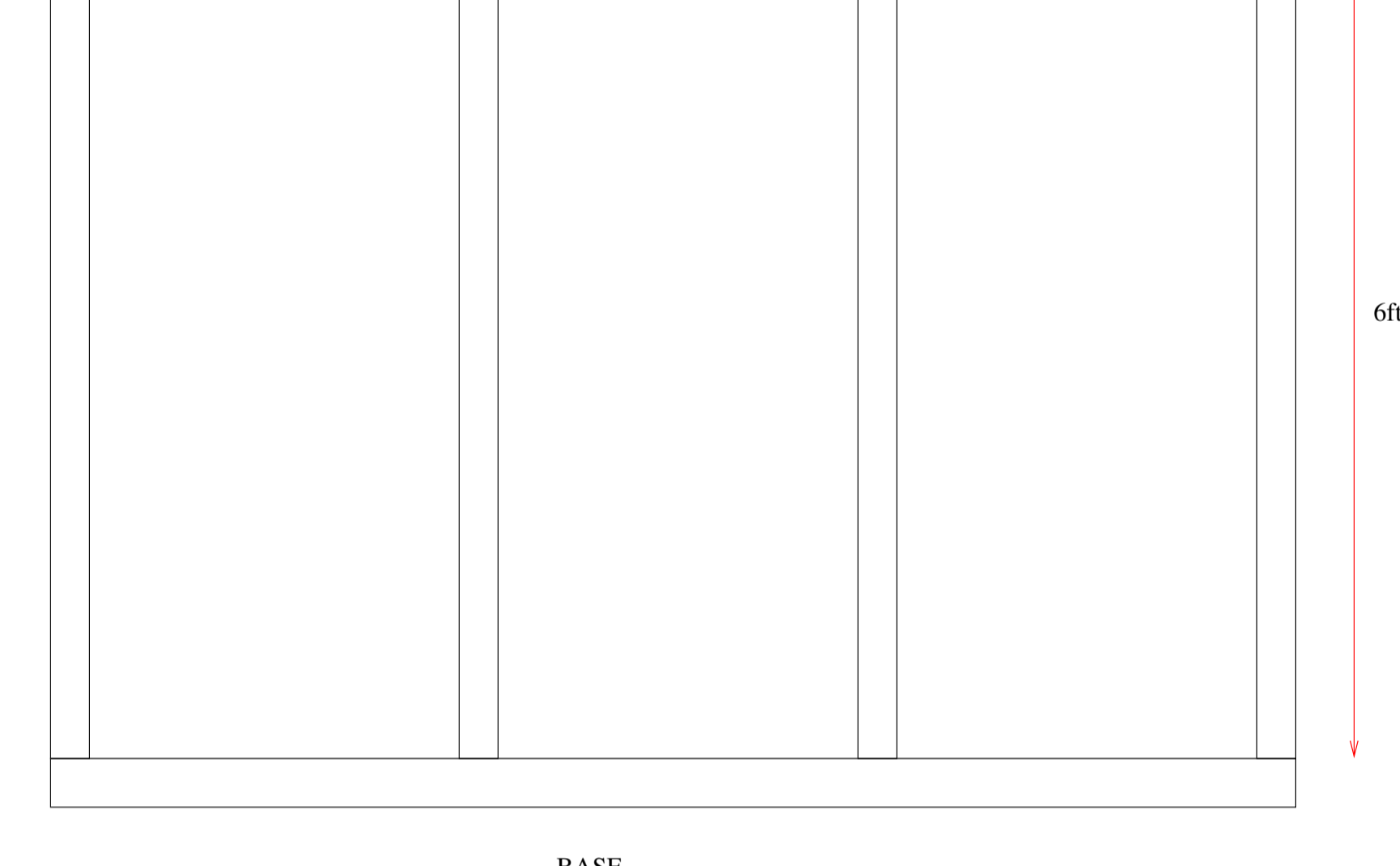
material count (2+4) 1x2 8ft fir + 1 3x1 x 8ft fir + 3 1x1 8ft fir



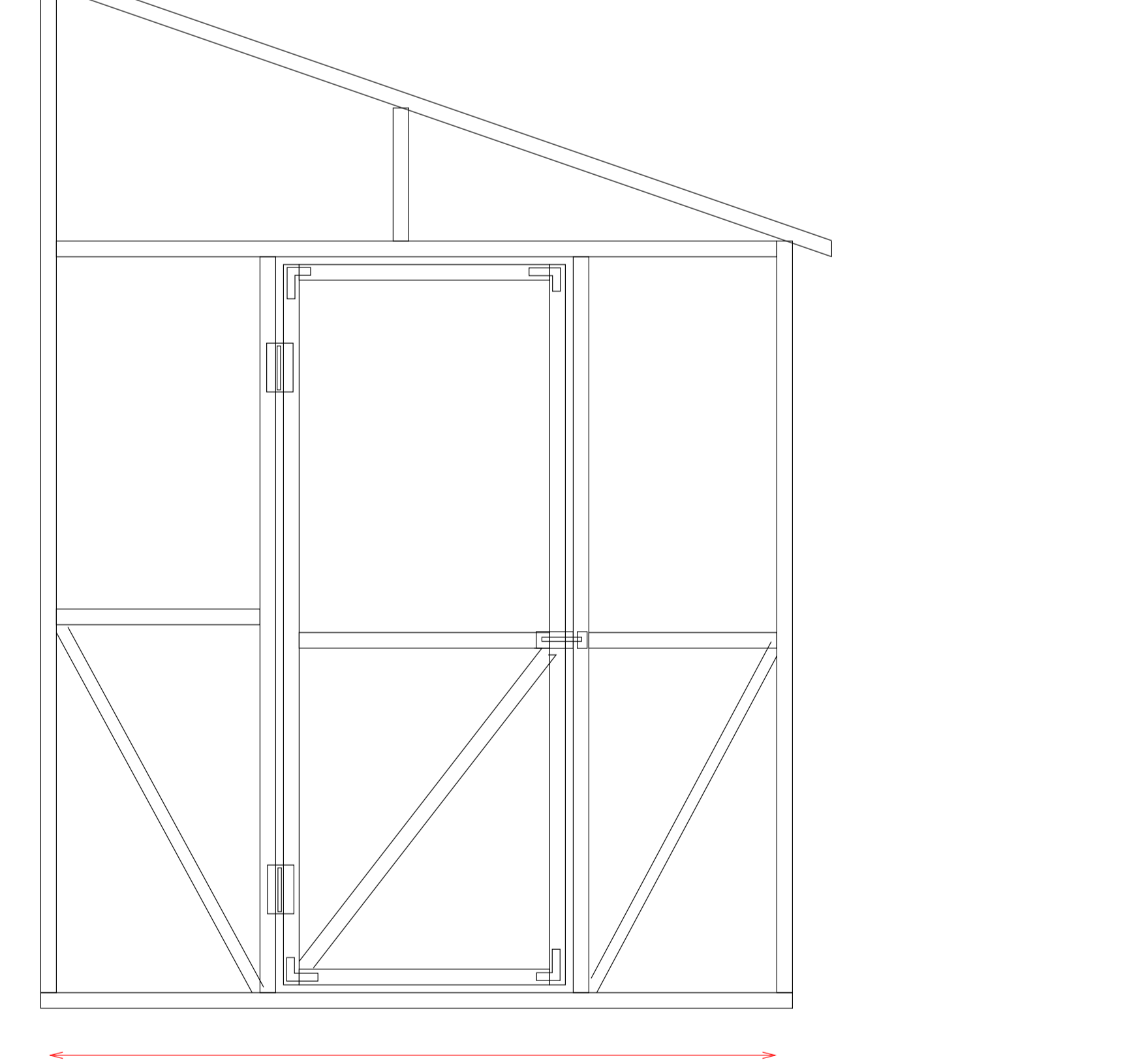
FRONT
1x2 Fir
material count (3+1+4) 8ft 2x1 fir = 8



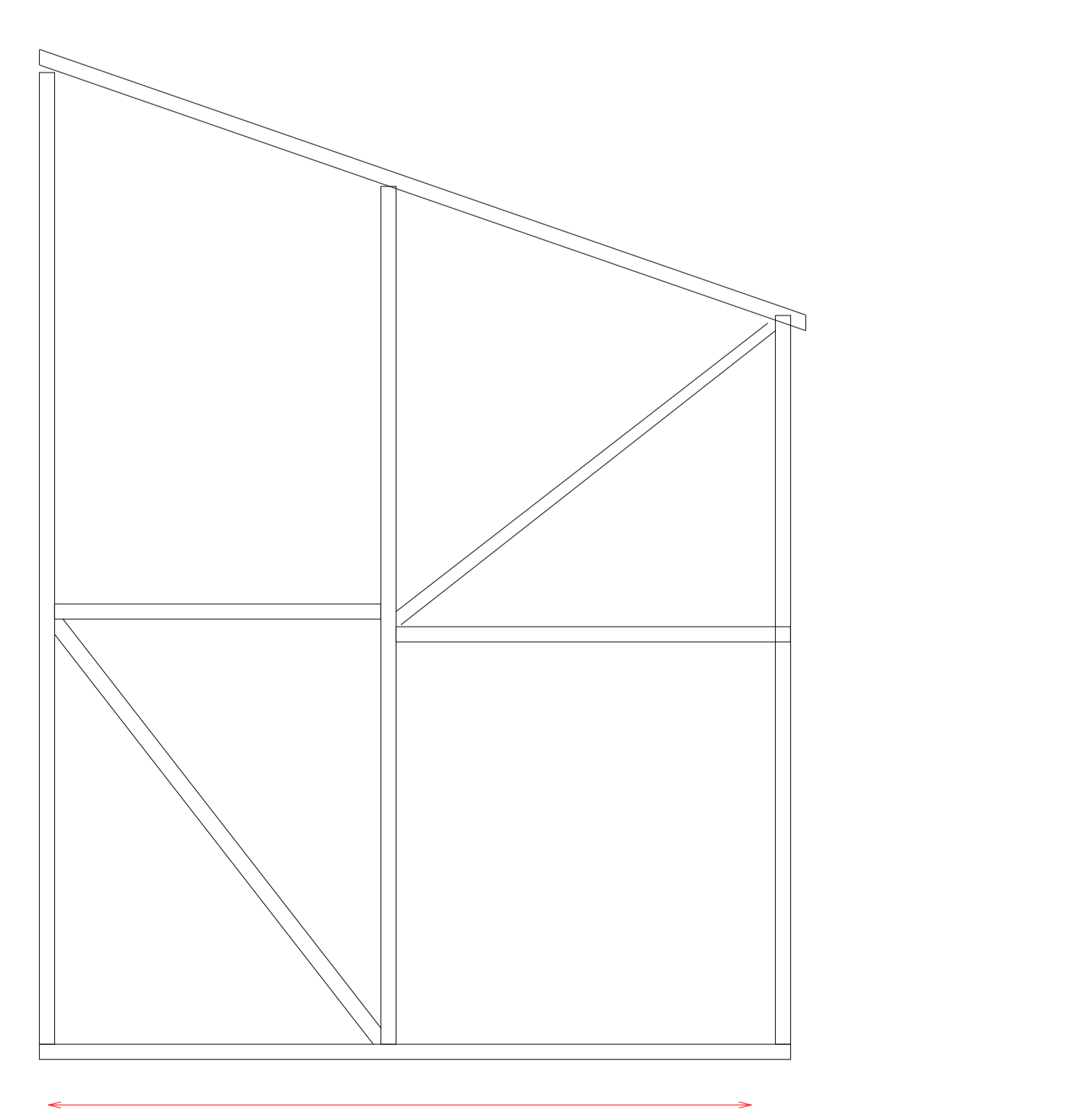
REAR
material count (3+1+4) 8ft 2x1 fir = 8



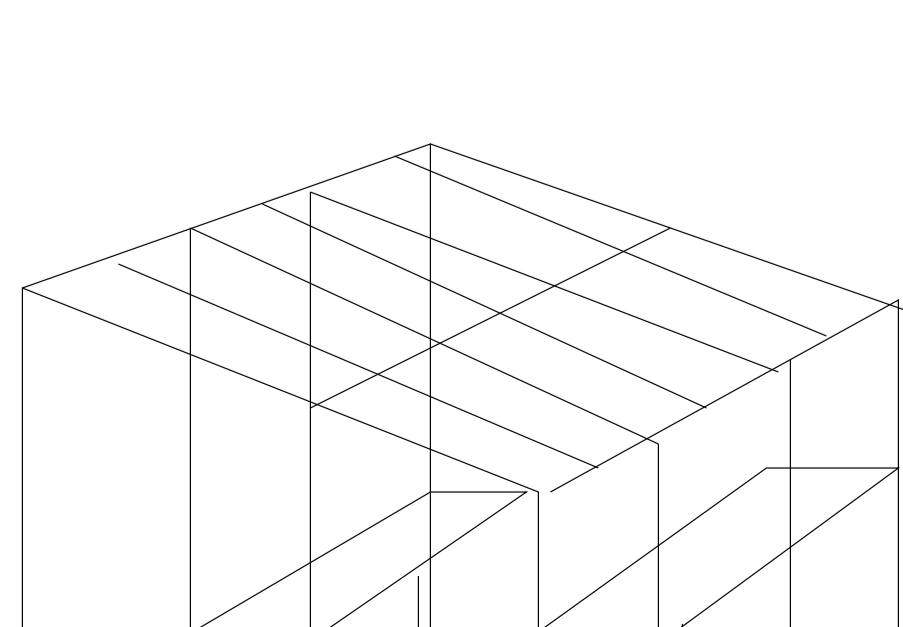
BASE
material count 6 1x4 x 8ft spruce
1x4 pressure-treated spruce? wrapped in poly sheet



Side with door
1x2 Fir
material count 10 1x2 8ft spruce
2 hinges, 1 bolt



Side without door
1x2 Fir



Shelves 3/8" x 2ft x 8ft OSB, supported by 1x2 horizontal members and legs