

Pattern Layout

Bodice
Cut 4 of 5 pieces

Skirt
Cut 2 with 1 fold

XL L M S XS

XL L M S XS

1

1

Instructions:

1. Cut out the bodice and skirt pieces from the pattern paper.

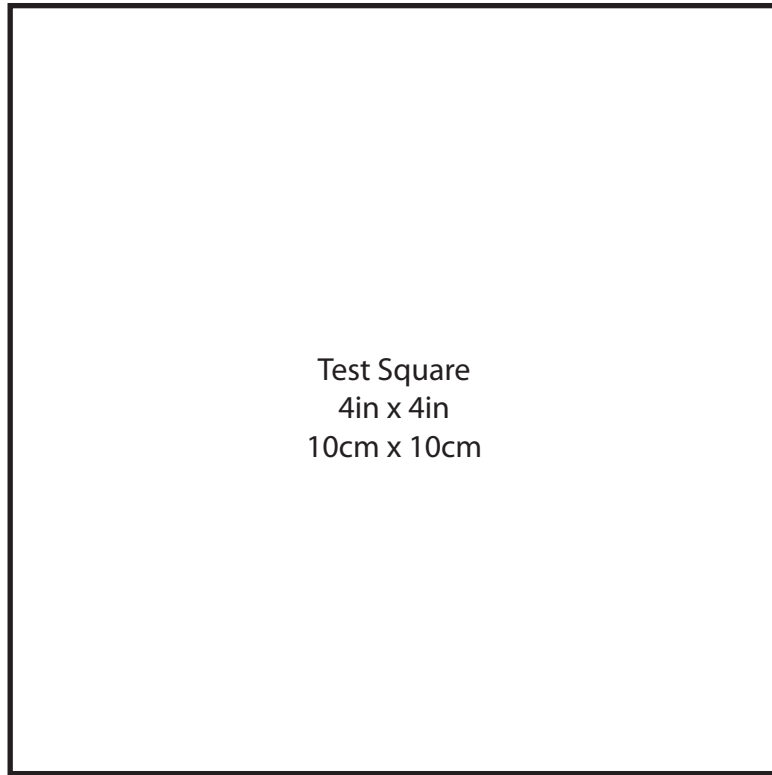
2. Sew the bodice pieces together, following the instructions on the pattern paper.

3. Sew the skirt pieces together, following the instructions on the pattern paper.

4. Sew the bodice and skirt together, following the instructions on the pattern paper.

5. Finish the garment by hemming the skirt and the bodice.

a  a



Cut



Instruc

1. You have
as the Inside
2. Right side
the Outside
3. Pair the
Pin together
4. Turn bo
5. Pin side
6. Insert el
the other s
7. The elas
edge of th
8. For the s
top edge o
the skirt w

2



2

XL

L

M

S

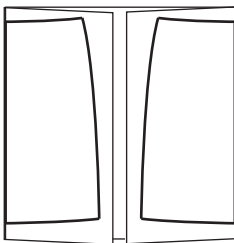
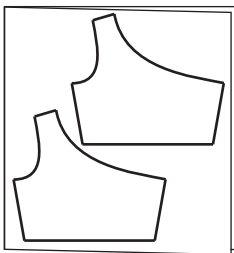
XS

Cutting Layout

Supplies

You will need approximately 2 yards of 60in wide knit fabric (lightweight jersey is best), matching thread and one package of 1/4in elastic.

b



Finished Garment Size Chart

	XS	S	M	L	XL
chest	31 in	33	35	37	39
waist	24 in	27	29	31	33
hips	open				
elastic length	28 in	30	32	35	36

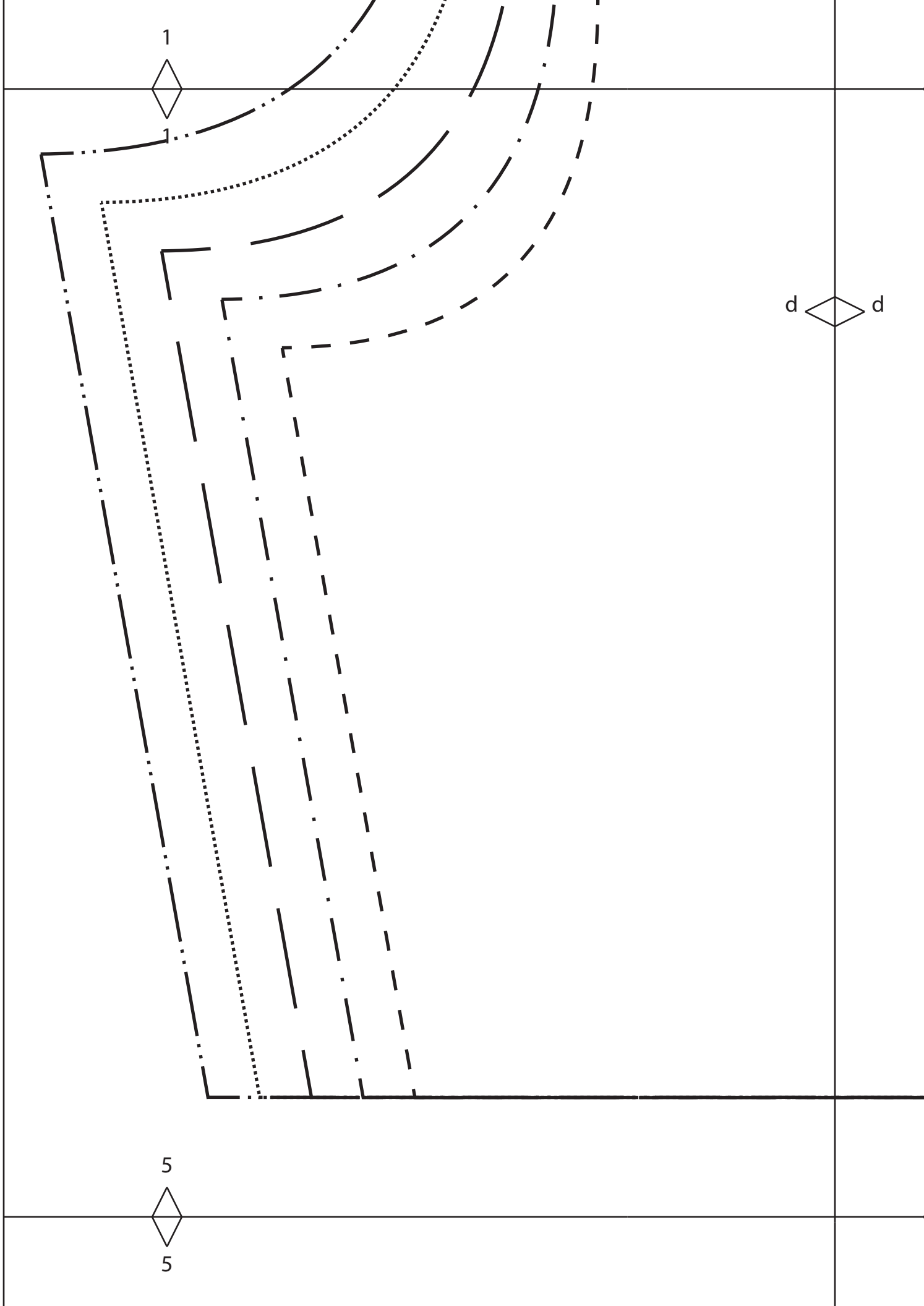
Seam
Allowance:
1/4 in

Instructions

1. You have cut four pieces for the Bodice. One set of two corresponding pieces will be referred to as the Inside and the other set as the Outside.
2. Right sides facing, stitch the two pieces of the Inside together at the shoulders. Do the same for the Outside pieces. To help reinforce the shoulder you can sew Stay Tape into the seam.
3. Pair the Inside and Outside together, right sides facing, matching shoulder seam and raw edges. Pin together. Stitch pieces together along the chest/back edge and along the armhole.
4. Turn bodice right side out. Press down chest/back and armhole seams.
5. Pin side edges of bodice together with right sides of Outside facing and right sides of Inside facing.
6. Insert elastic through the side up along the chest/back seam, through the shoulder and back to the other side. Overlap the two ends of the elastic 1/2 inch and stitch together.
7. The elastic will sit along the chest/back seam. To enclose the elastic stitch 5/8 in away from the edge of the chest/back seam.
8. For the Skirt match up raw edges of the two skirt pieces and stitch up both sides. Gather along the top edge of the skirt. Matching side seams pin together the bottom of the bodice and the top of the skirt with right sides facing. Stitch together. Hem the bottom of the skirt.

3

3



1



1

d



d

5



5

2



2

S

XS

d



d

e



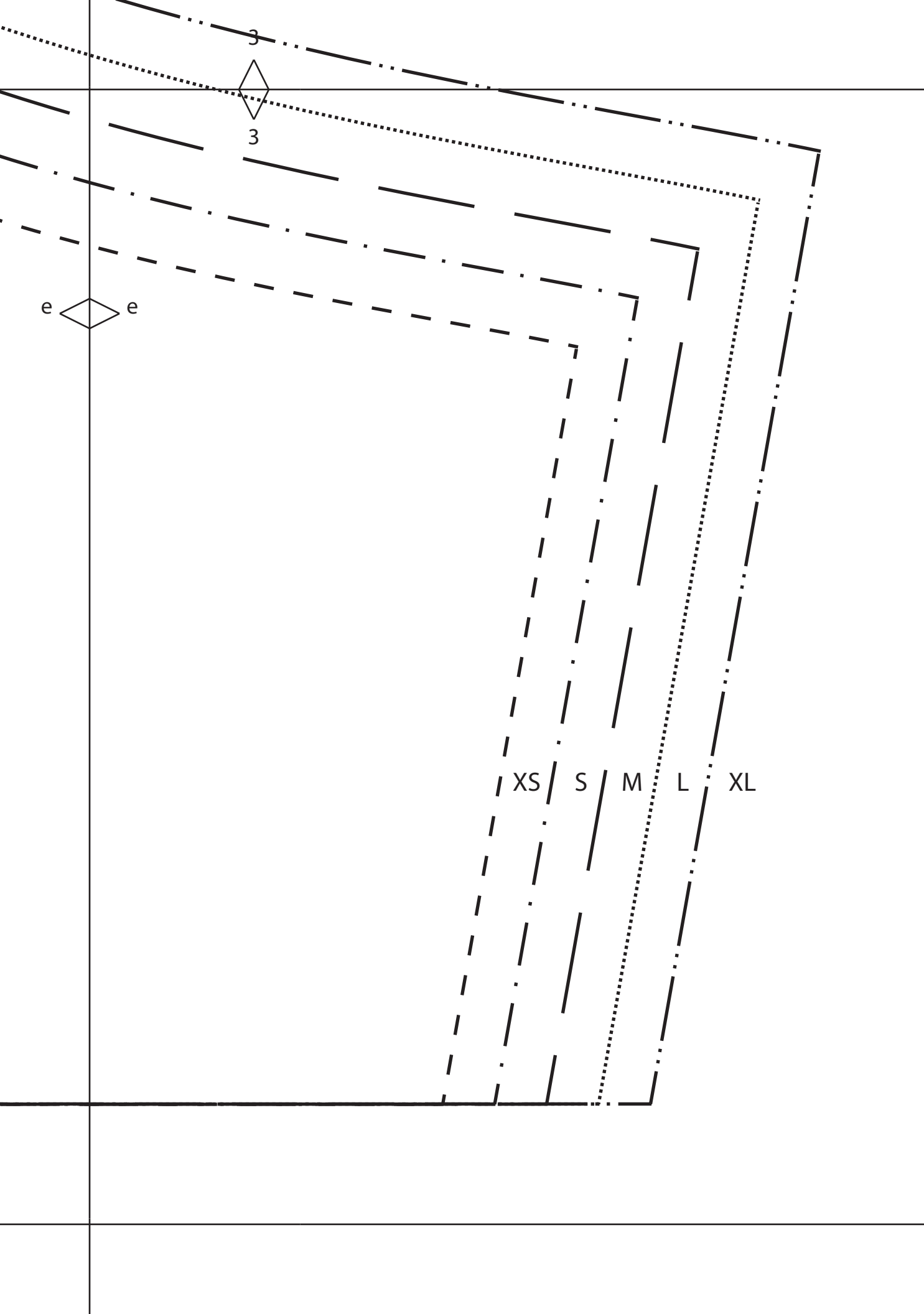
e

Bodice
Cut 4 of fabric

6



6

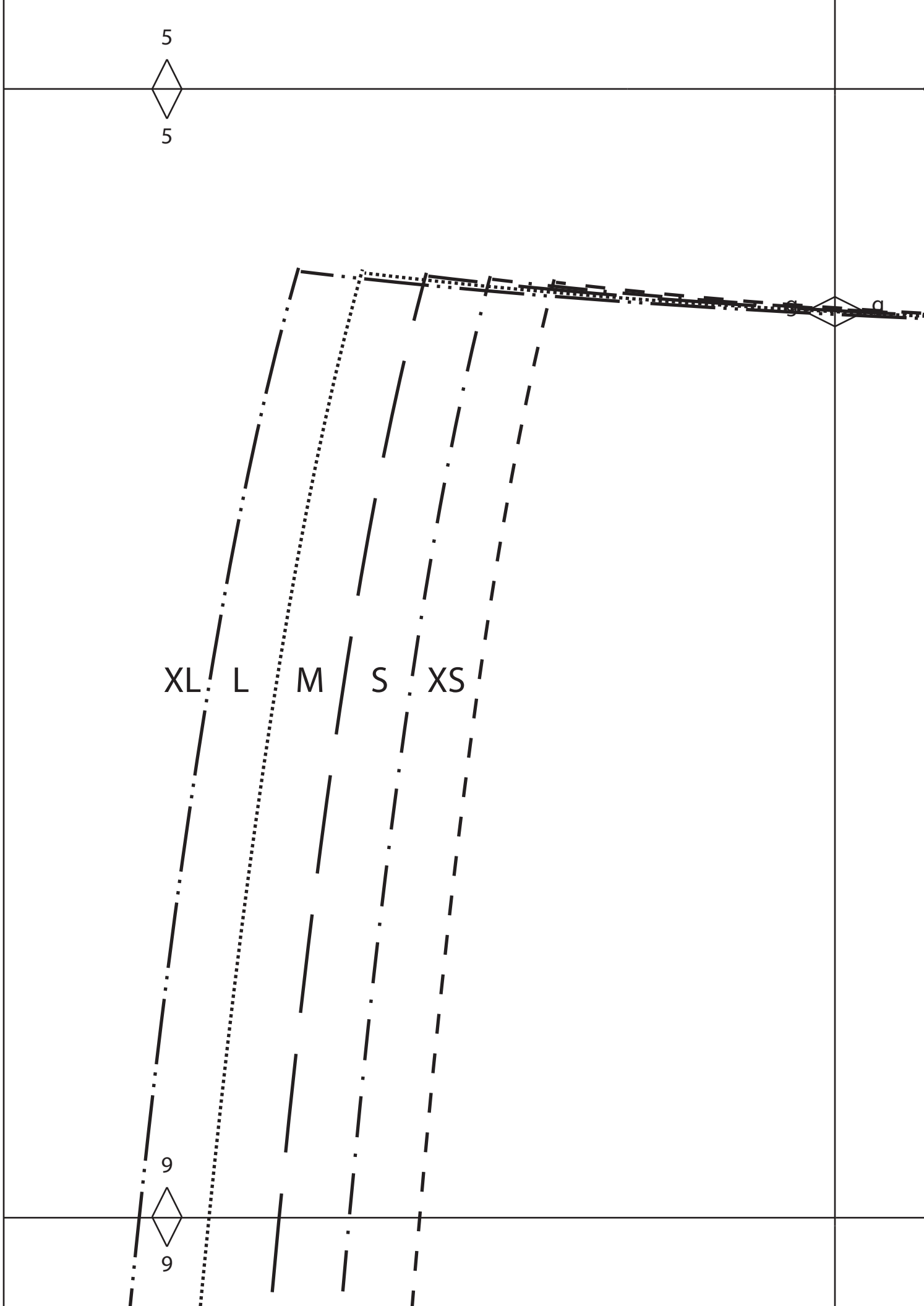


5
◇
5

XL L M S XS

9
◇
9

◇



6



6

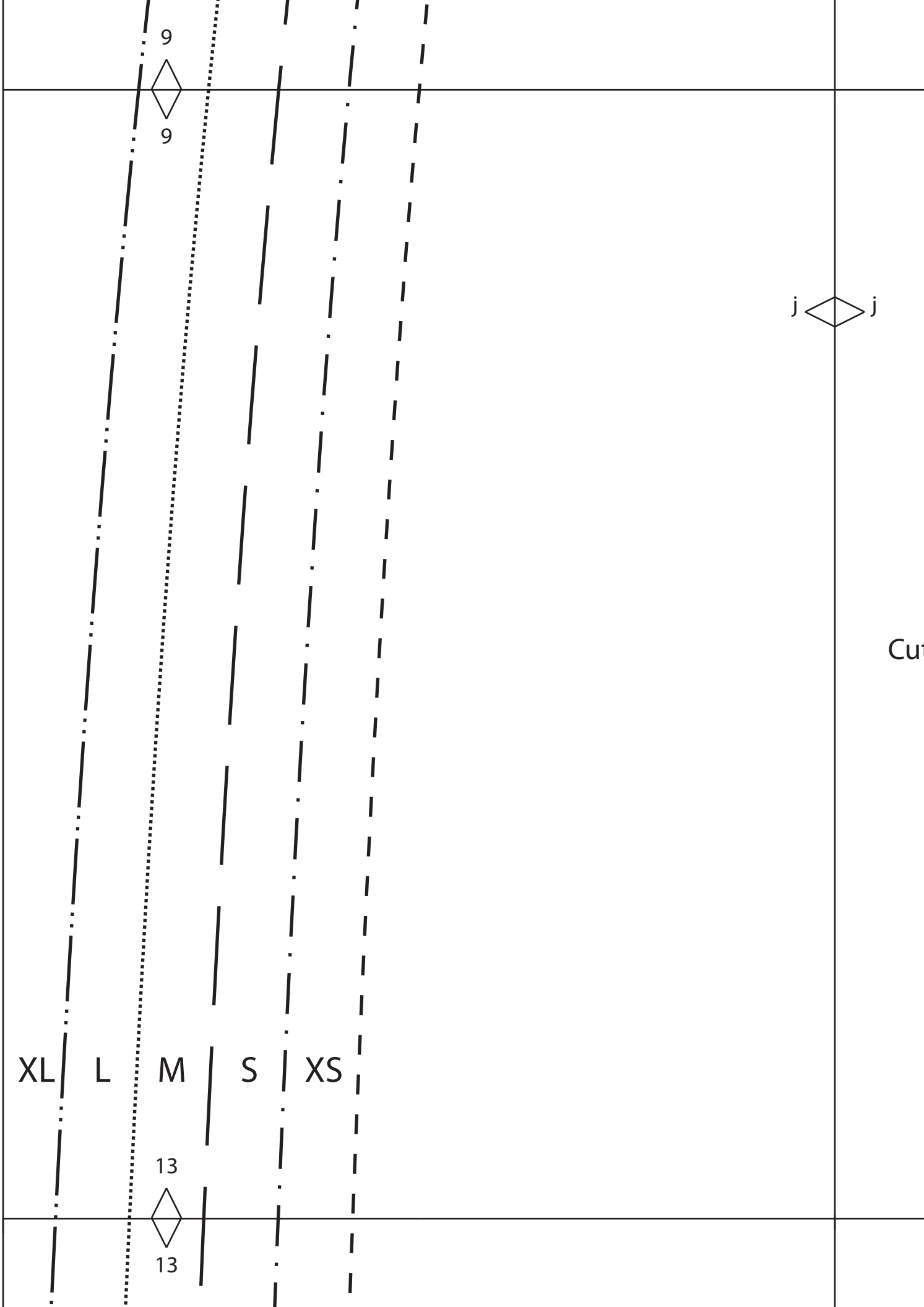
6

0

10



10



9



9



j

Cu

XL

L

M

S

XS

13



13

10



10



Skirt
Cut 2 on Fold

Center Fold

14



14

13

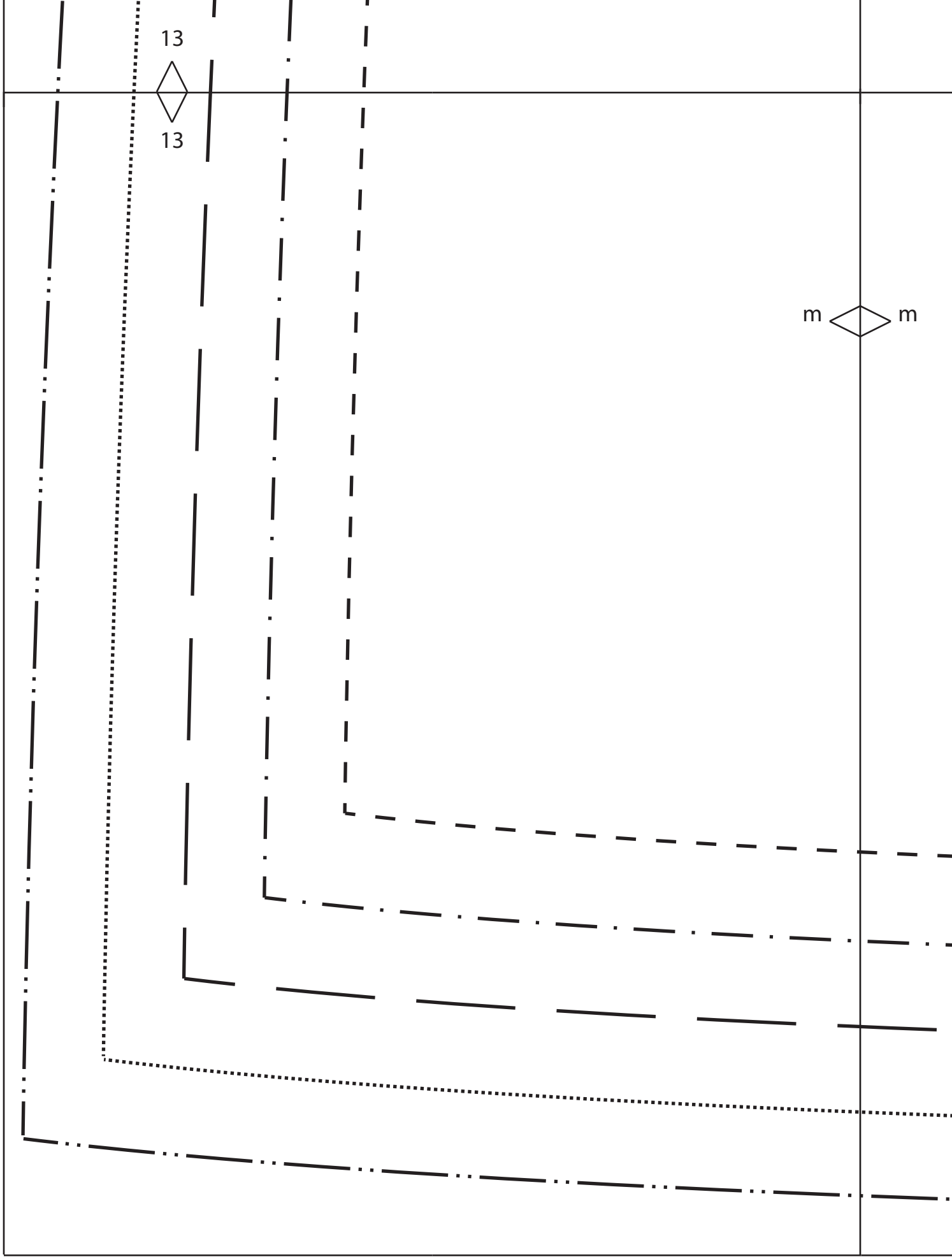


13

m



m



14



14

m



m

