

PRODUCED BY AN AUTODESK EDUCATIONAL PRODUCT

PRODUCED BY AN AUTODESK EDUCATIONAL PRODUCT

CHANGES FOR OPTIONAL SHOULDER STRAPS:  
 - MINUS 1 YARD OF 2" MED WT WEBBING.  
 - PLUS 1/2" YARD OF MATERIAL (THIS COVERS THE DRAW STRING COLLAR ALSO)  
 - 7" X 29" PEICE OF FOAM

OPTIONAL SHOULDER STRAP STEP 1: TACK THE WEBBING TO THE CLOTH LEAVING A 1" OVERHANG



OPTIONAL SHOULDER STRAP STEP 2: SEW THE BODY FACING PART OF THE SHOULDER STRAP TO THE PART FACING AWAY FROM YOUR BODY WITH THE OUTSIDES TOGETHER.



seam tolerance is 1/2", same as the rest of the bag..

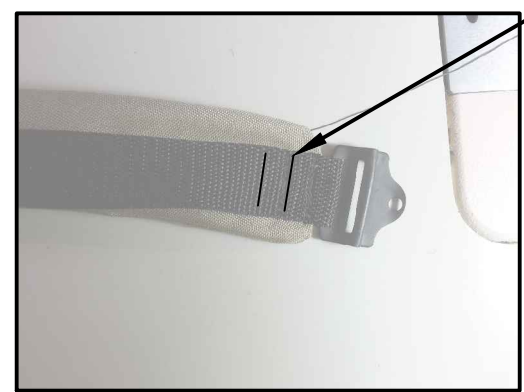
30" long piece of med wt webbing

OPTIONAL SHOULDER STRAP STEP 3: TURN RIGHT SIDE OUT BY PRESSING YOUR FINGER INTO THE END, ONCE IT IS STARTED, YOU CAN PULL ON THE WEBBING UNTIL THE STRAP IS FULLY TURNED. BARTACK THE WEBBING TO THE TURNED SEAM THEN ADD THE BUCKLE AND TACK THE WEBBING TWICE, ONCE NEAR THE BUCKLE AND ANOTHER TIME 1/2" FROM THE FIRST TACK.

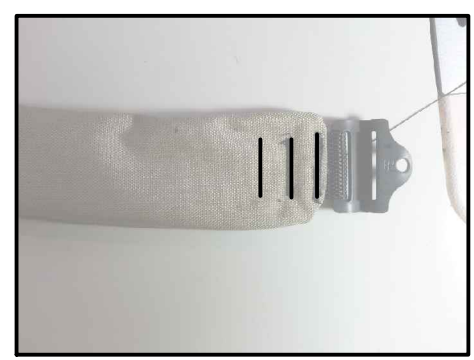
OPTIONAL SHOULDER STRAP STEP 4: STUFF WITH FOAM, PRESSING THE FOAM IN TIGHTLY AND PINNING THE END OF THE STRAP TO HOLD IT TIGHT. THEN ADD STERNUM ADJUST AND SEW THE STRAP DOWN WITH 2 BARTACKS. TO DO THIS YOU MAY NEED TO CUT OUT THE FOAM WHERE YOU ARE SEWING DEPENDING ON THE STRENGTH OF YOUR SEWING MACHINE.



bartack here



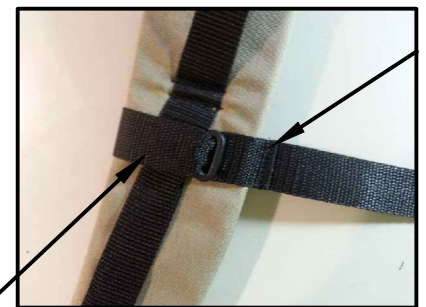
start first tack right after seam overlap (aprox 1/2" in)



18" peice of 3/4 med wt web



STERNUM STRAP IS WRAPPED OVER THE ADJUSTER IF IT IS NOT DESIGNED TO PASS THROUGH BOTH SIDES (THE QUEST OUTFITTERS AJUSTER IS SHOWN)



Fold over and bartack