

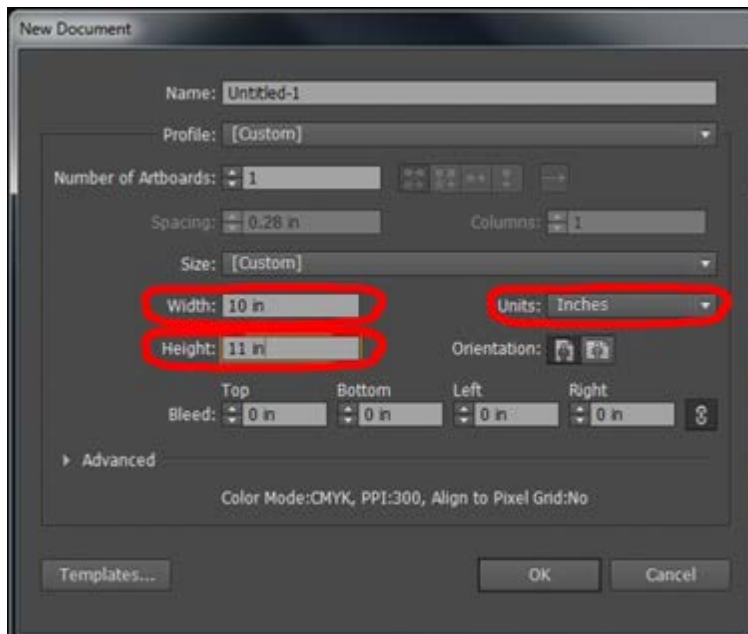
Laser Cutting from Adobe Illustrator CS6 on VLS6.60 (For Adobe Illustrator CS6) for CARDINAL & BLUE JAY

If you're starting a new document

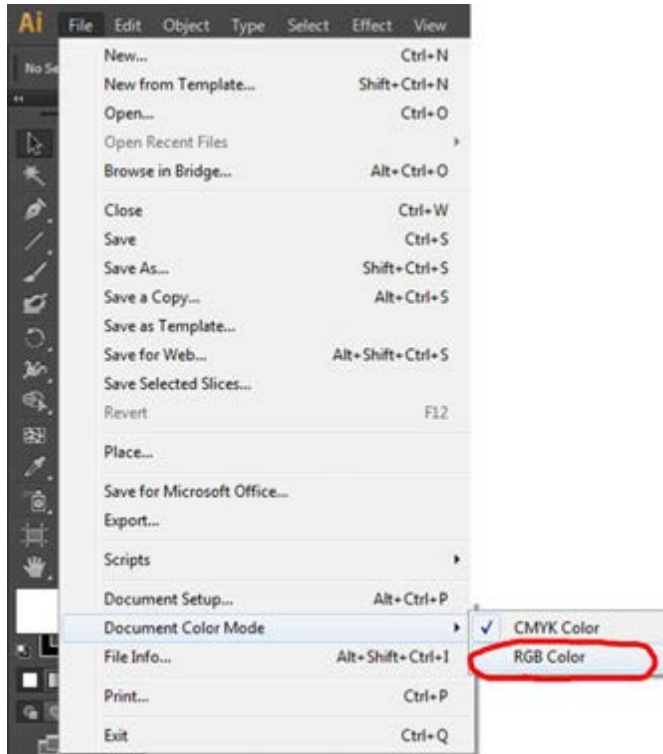
1. Open *Adobe Illustrator CS6* and go to **file...then new**
(If your file has already been created...go to file, then open and open your file)



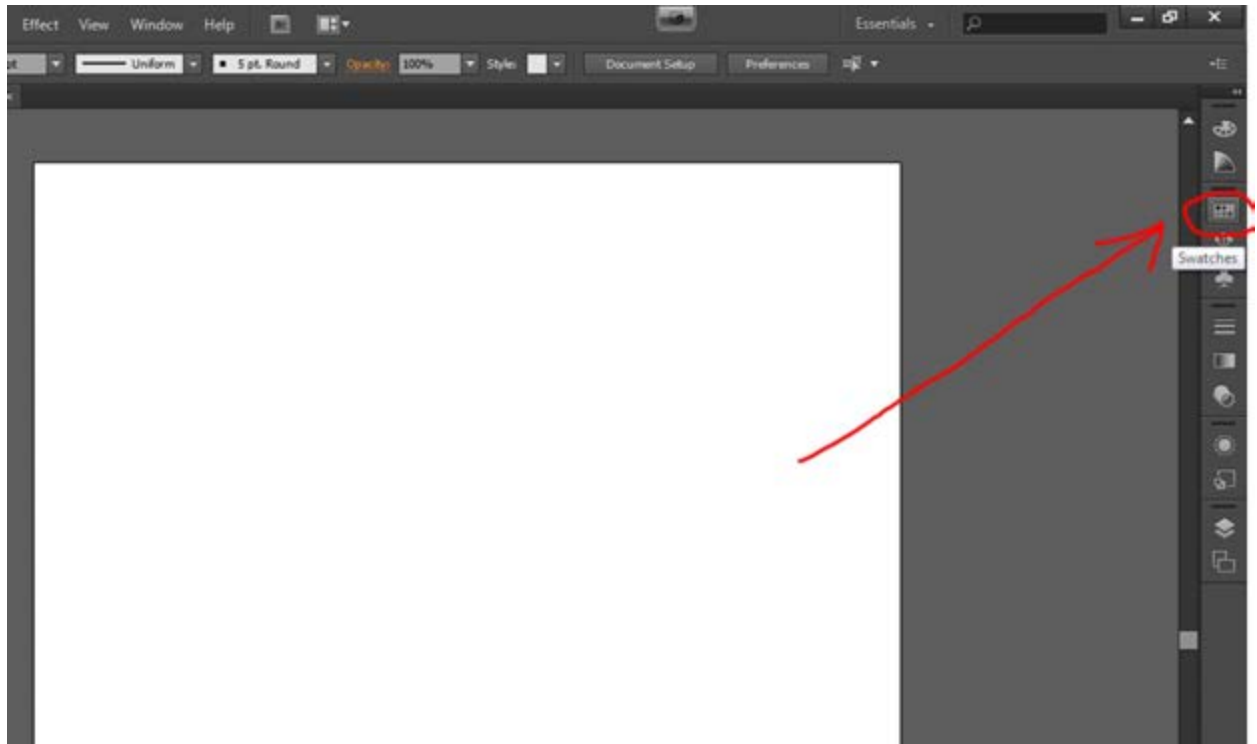
2. Set your paper size to the **actual dimension** that you plan to cut your material with
(Example: 10"x11" – is the actual dimension that I plan to cut my selected material)
(SN: use 17.5 x 31.5 if you do not want to create your .25" offset box)



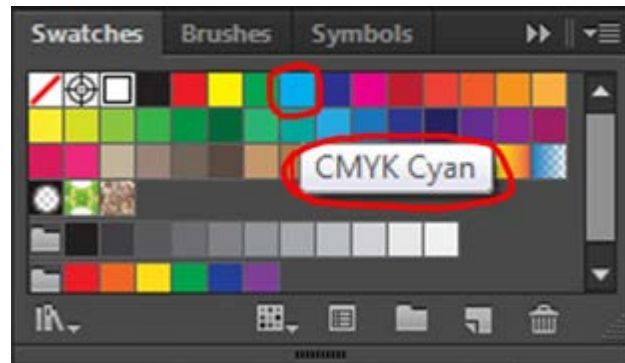
3. Go to file....select Document Color Mode....and make sure you select **RGB**



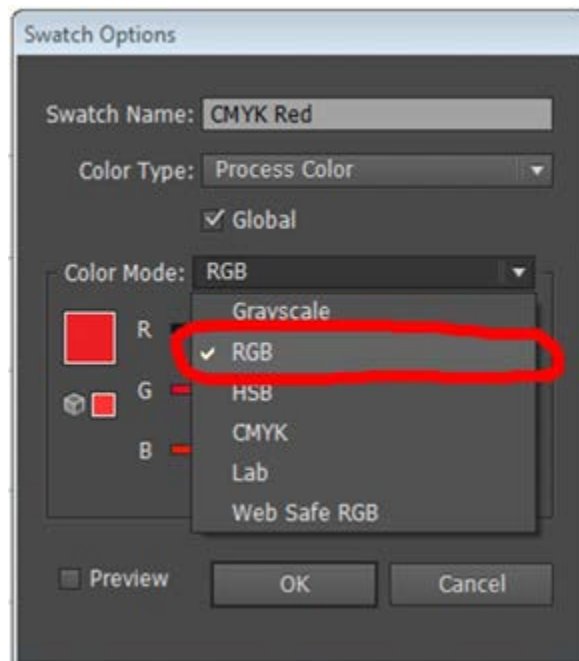
4. On the right side of the screen, in the taskbar, go to the swatch panel selection



5. When the swatch panel is open, **double click on the color you want to use/modify.** (i.e. cyan, red, blue, etc.)

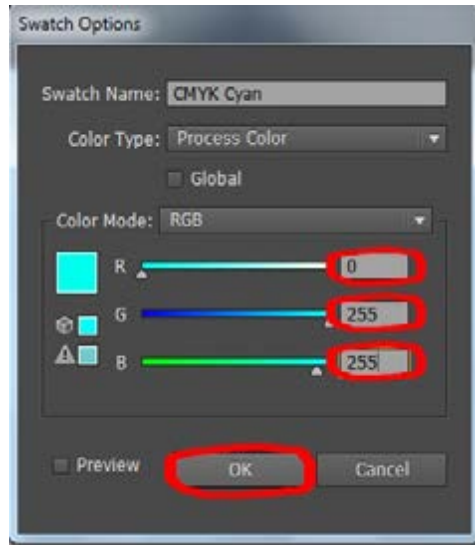


6. Use the existing swatch name, (don't worry about the swatch name) and adjust to the appropriate **color mode** for each color. Double click on the colors and adjust the numbers to its appropriate settings within the right **color mode**.
 - a. Make sure that you select the **color mode** to **RGB** (RED, GREEN BLUE)

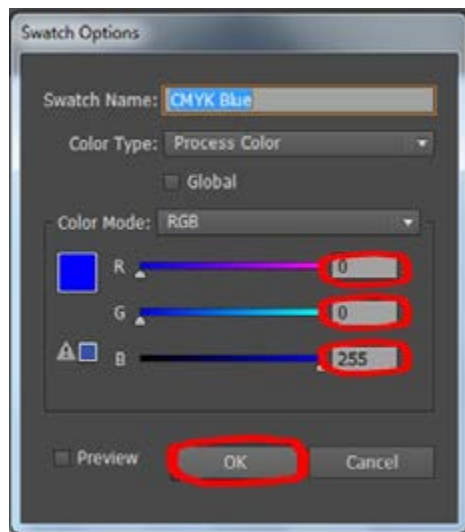


- Adjust each color to the appropriate RGB number. Double click on the colors and adjust the numbers to its appropriate settings. See color settings.

Color (R) Red - (G) Green - (B) Blue
Cyan R: 0 G: 255 B: 255



Blue R: 0 G: 0 B: 255



Color

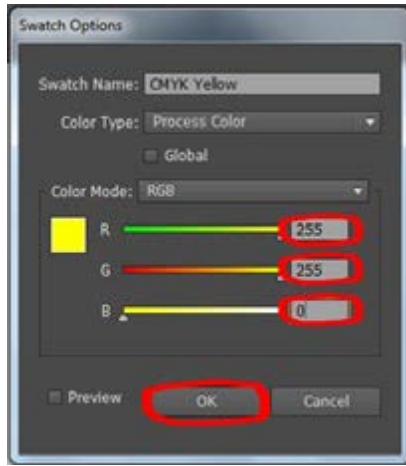
(R) Red - (G) Green - (B) Blue

Yellow

R: 255

G: 255

B: 0

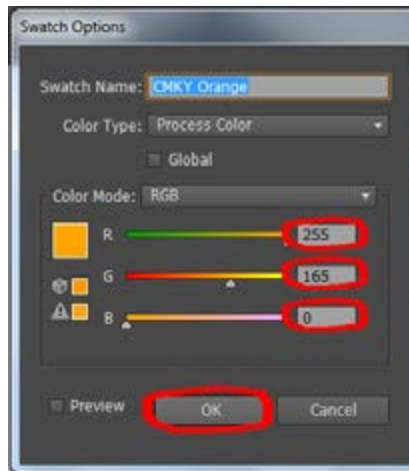


Orange

R: 255

G: 165

B: 0

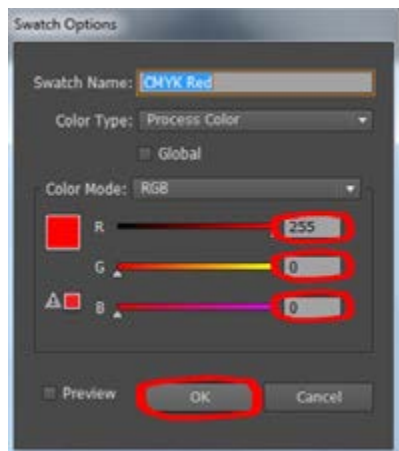


Red

R: 255

G: 0

B: 0



Color

(R) Red - (G) Green - (B) Blue

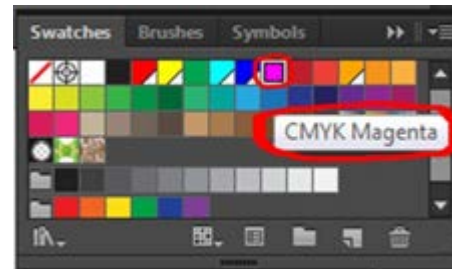
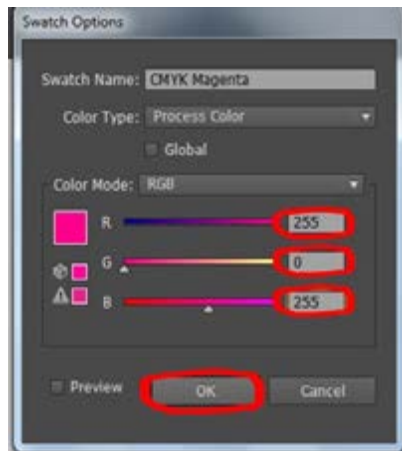
Magenta



R: 255

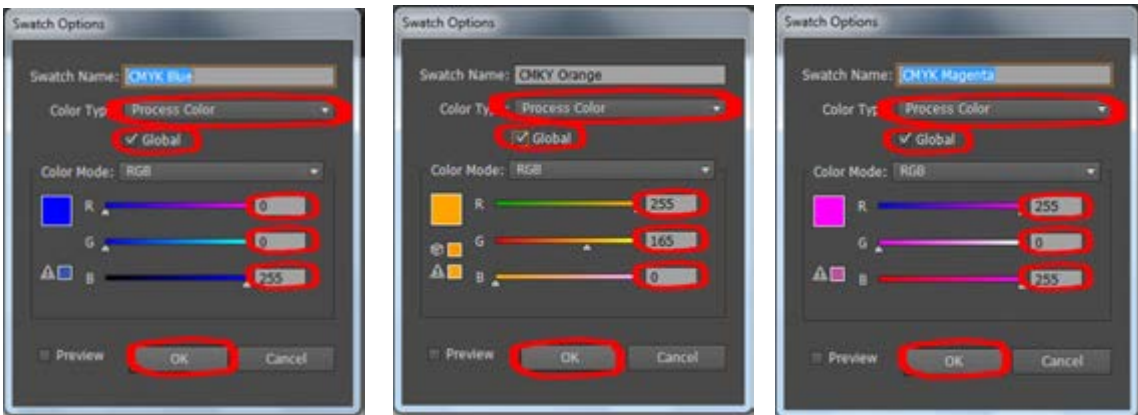
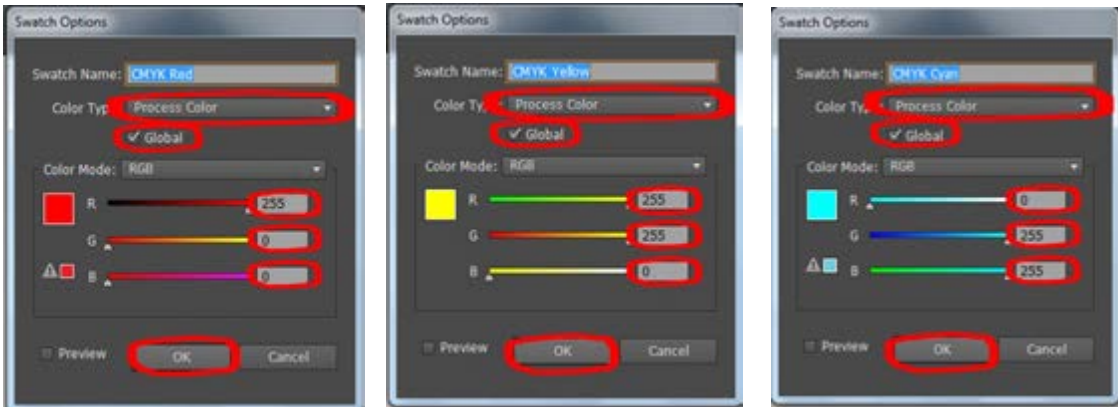
G: 0

B: 255

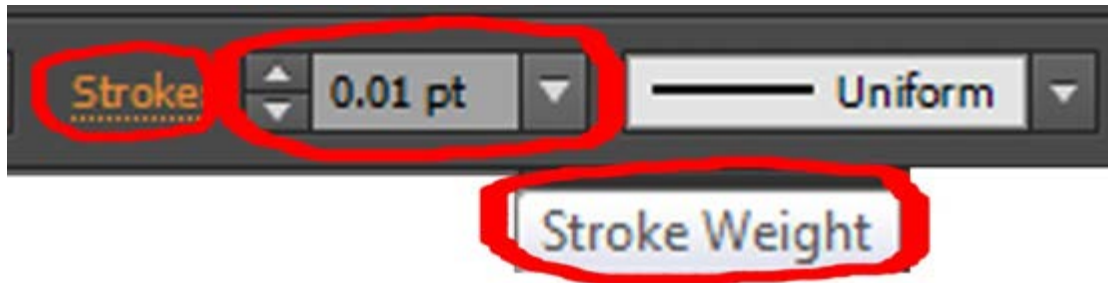


- *If selecting multiple colors and layers, its best to set a Global Color of the Document by going to the swatch Panel on the right Task bar and clicking the Swatch Option Menu for the selected swatch.*

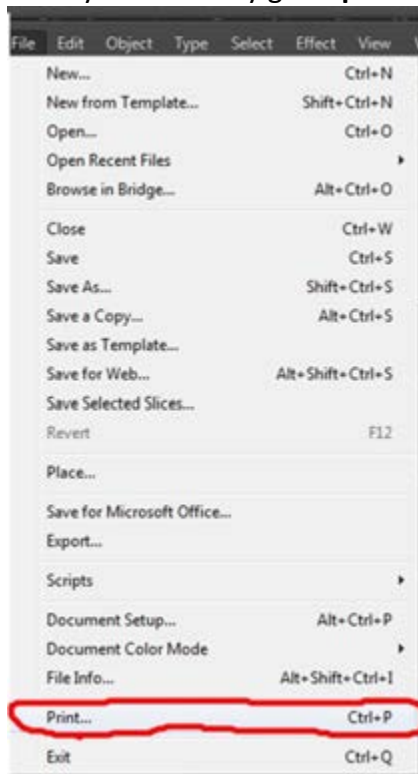
- Check the box titled **“Global Color”** and make sure the color is labeled as **“Process Color”**.



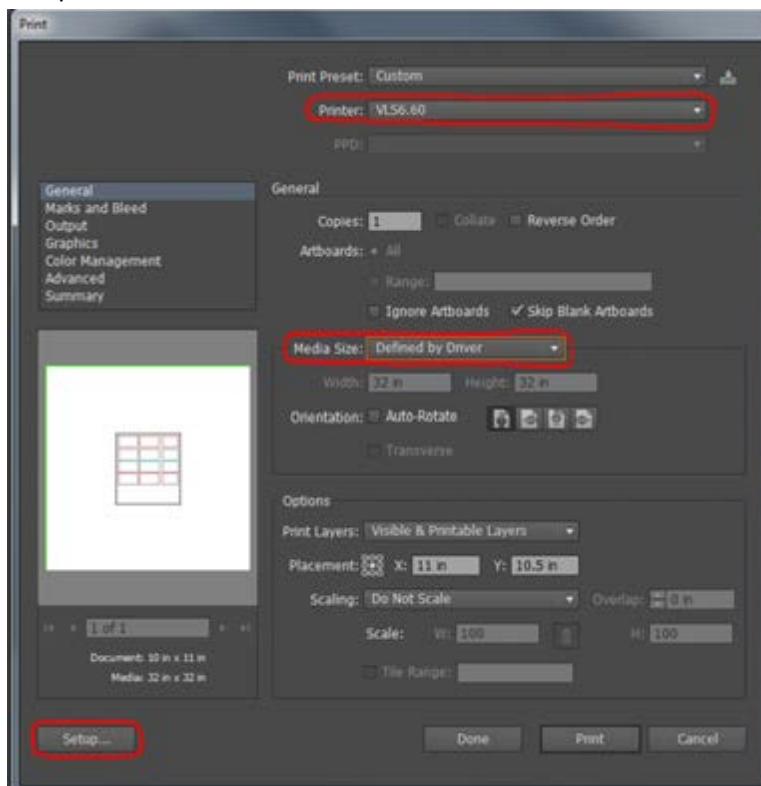
8. Set all line weights to .01 pt. in **stroke** section at the top above “Type”. This includes the edges of all objects, (text objects, rectangles, circles, etc.)



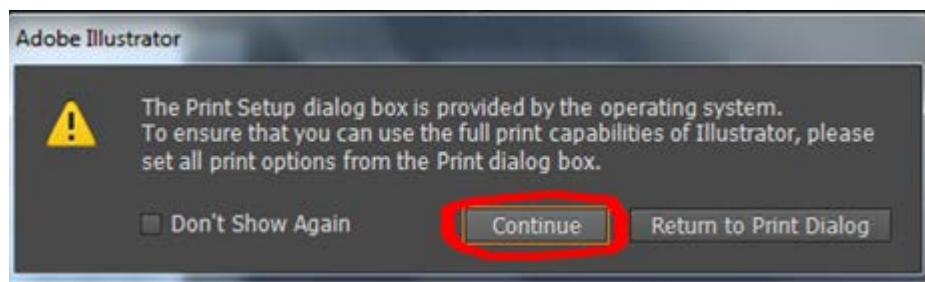
9. Once you are ready go to **print...**



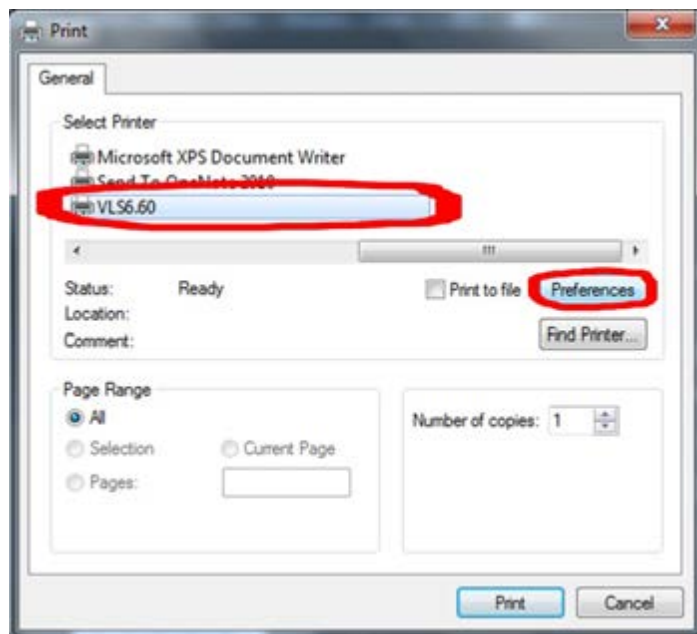
10. Make sure the *Printer* is set to **VLS6.60**, *Media Size* as **Default by Driver**, and then go to setup....



11. Once the warning box appears, press **continue**....

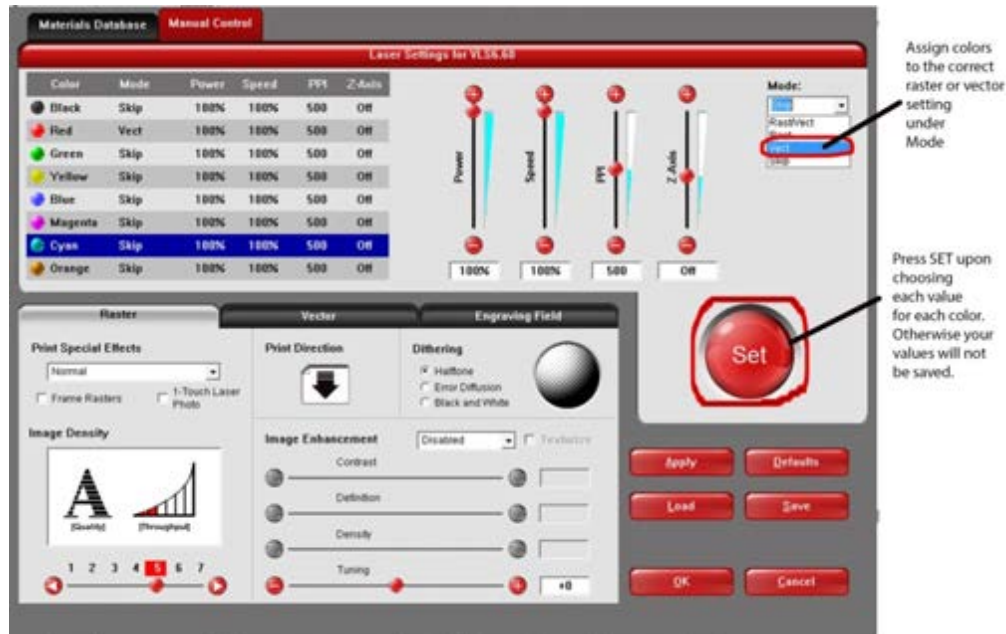


12. Go to **preferences**....



- Set the colors according to your desired vector cuts or rastered objects. Set settings for colors in this window before moving to UCP. If not, the colors will not have the option to be changed from vector to raster or vice versa, leaving the only option available as skip.

Make sure you adjust your appropriate **Power, Speed, PPI and Z-axis**



(SN: Do not use the **Materials Database** or the **Raster** section)
If you need to, save your settings to an appropriate location.

- Very IMPORTANT:**

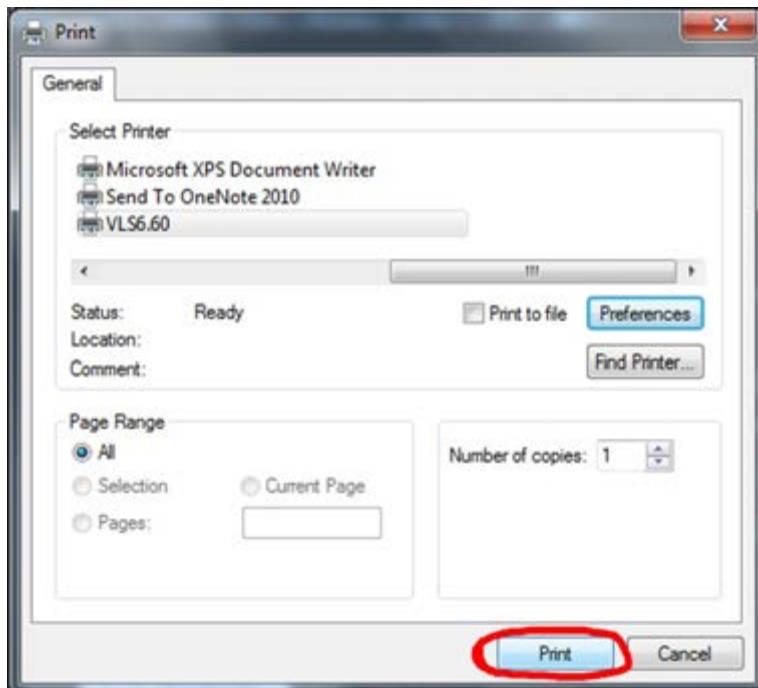
You need to set up the specific length and width of your material in the **Engraving Field** settings. Select **Inches** under **Units** and type the length and width under **Engraving Field**. When finished press **Set**.



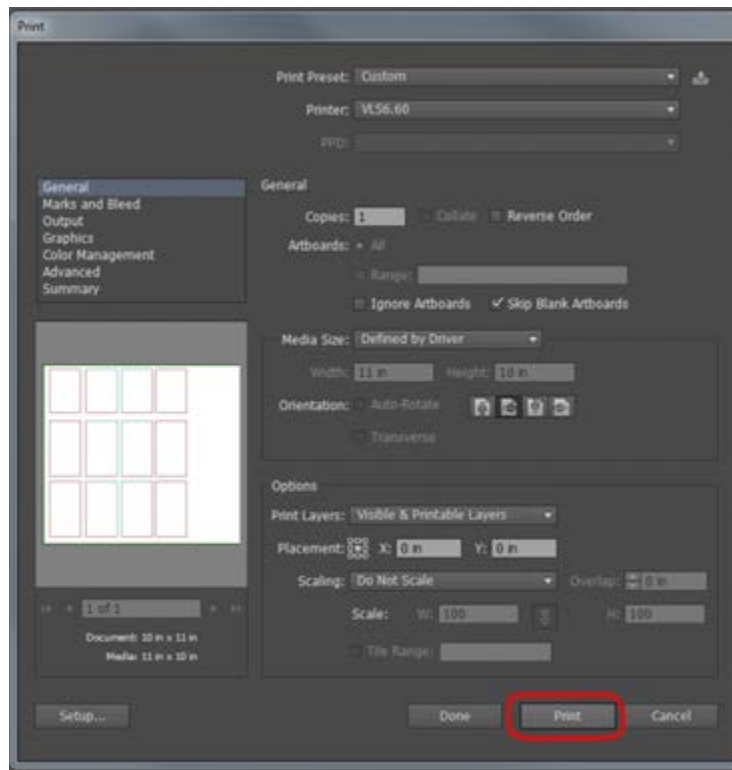
When you have finished your *Engraving Field* settings **DO NOT** touch anything under **RASTER** or **VECTOR**.....then press **OK**.



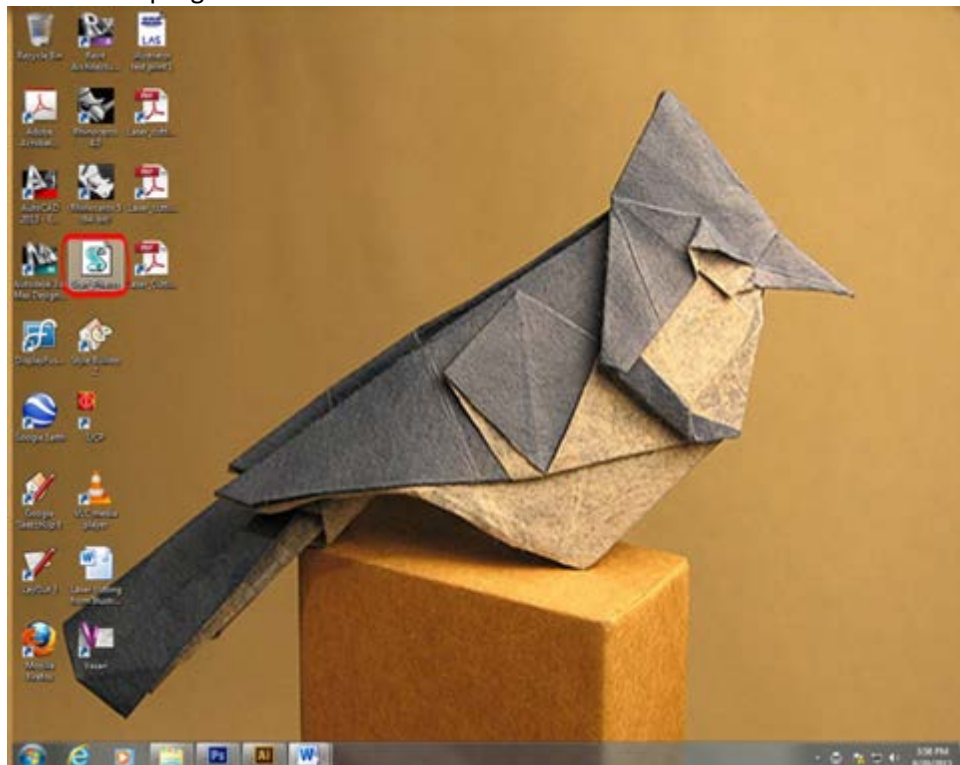
15. Press **Print...**



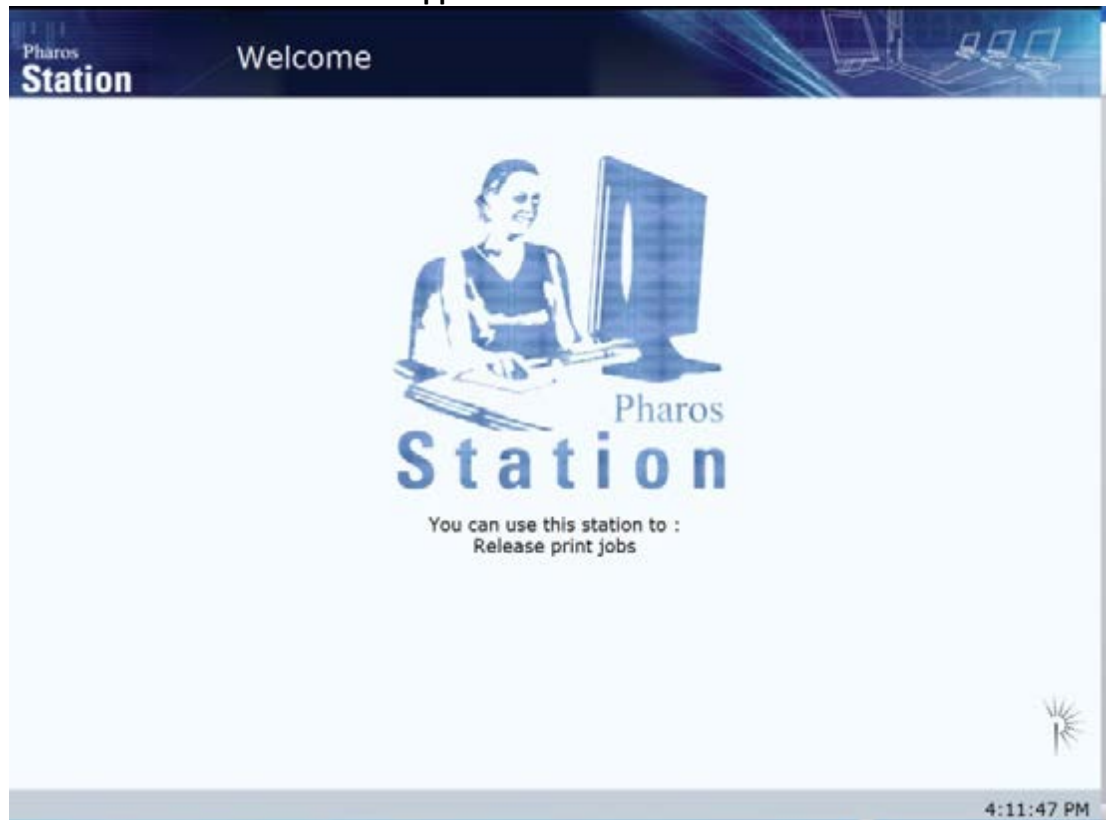
16. Make sure your settings are correct, and then select **Print** again on the black print settings for Illustrator CS6...



17. Once you have selected print, go to **Start Pharos** on the desktop screen in order to open the laser cutter program...



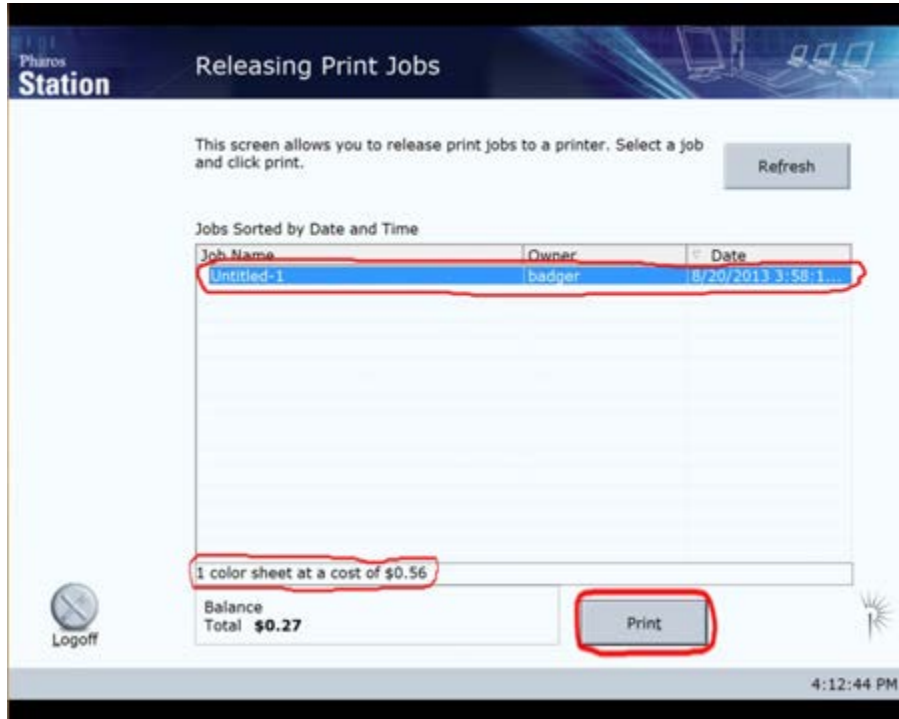
18. NOTE: The Pharos screen should appear to the LEFT monitor



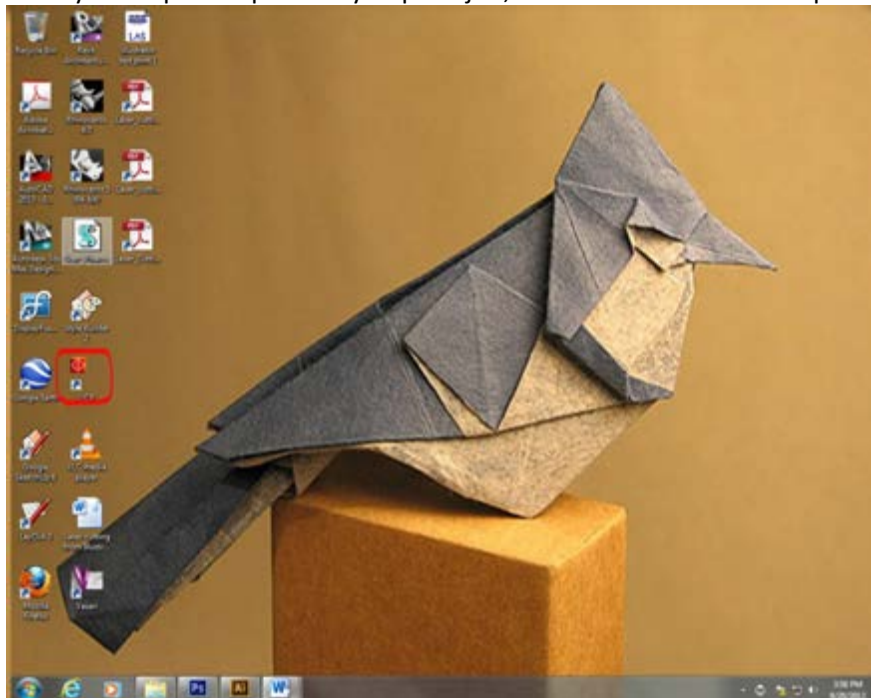
NOTE: if the Pharos screen appears on the right monitor above the desktop computer, simply hold down on the keyboard (Ctrl+Alt+Left arrow)



19. Swipe your Card...and select your file that is listed on Pharos and check the cost at the bottom of the screen to see if it's the correct price according to the **dimensions you typed** in for your selected material. You should always **preset** your dimensions before printing your file. **(YOU ARE BEING CHARGED PER SQUARE INCH OF MATERIAL)**
When ready, press **PRINT**.
(YOU HAVE TO PAY FOR YOUR PRINT FIRST BEFORE YOU OPEN UCP!)

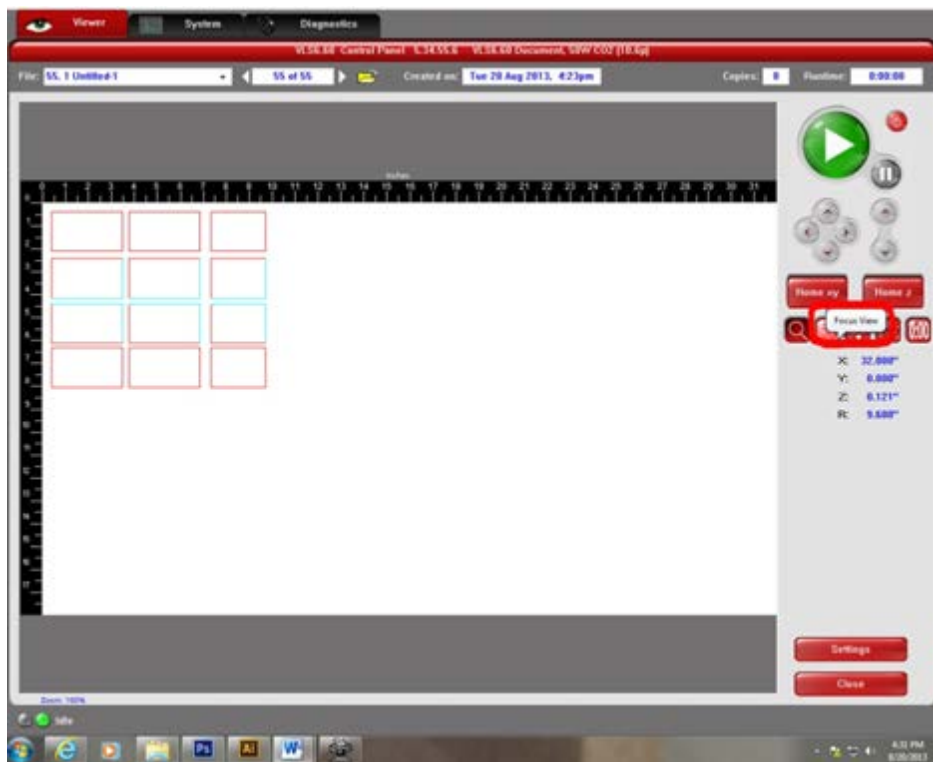


20. After you swipe and paid for you print job, OPEN UCP on the desktop....

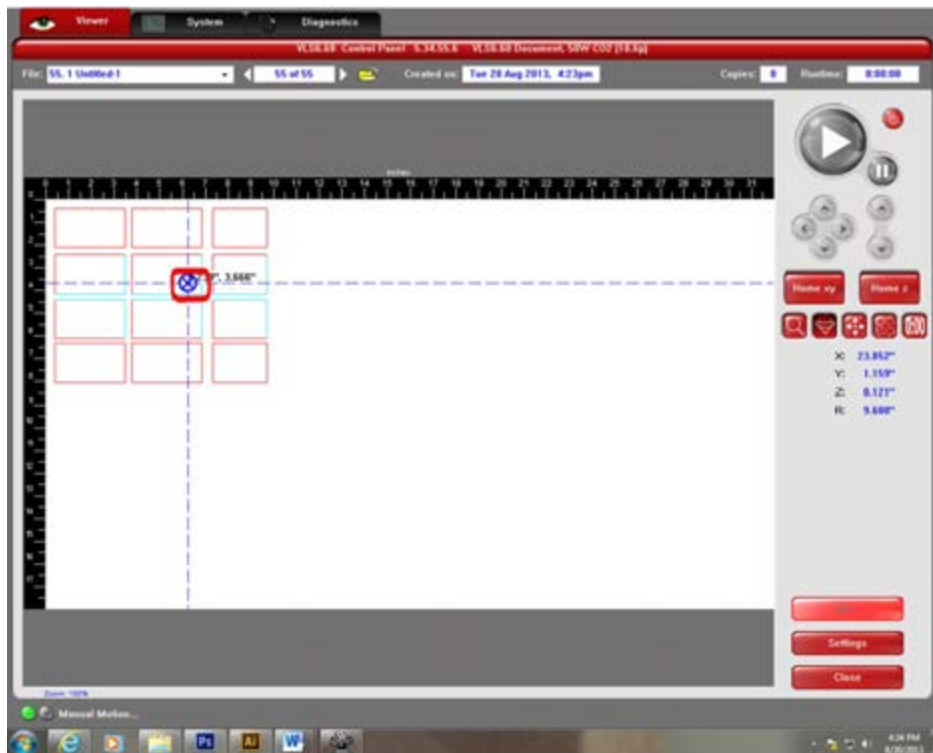


21. Once **UCP** opens....check to make sure the laser cutter is turned on. Before you begin cutting you have to make sure that you correctly focus the laser machine.

Select “Focus View”

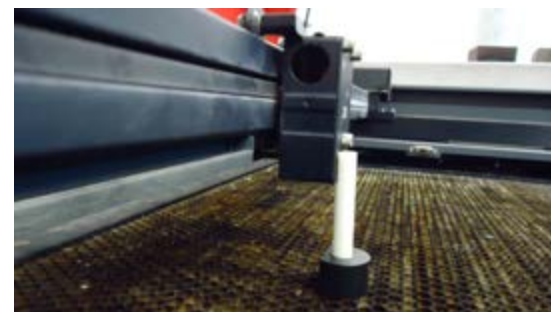
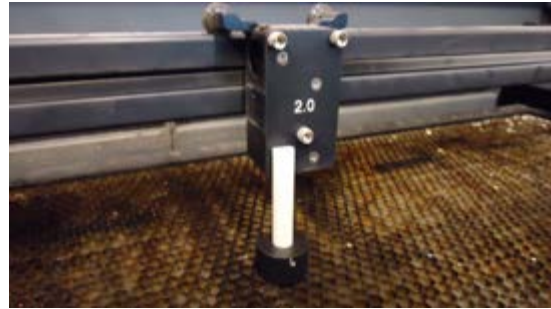


Once you select focus view, move the cross hairs over your material and hit the mouse button and the laser head will move to that point.



22. Take the focus tool and set it on your material in front of the laser head, and use the **Z arrow buttons (up or down)** on the machine interface, **raise or lower the bed** so that the focus tool nestles into the laser head. Make sure you have the **focus tool** nestled into the indent of the “**front of the laser head**”

Example :



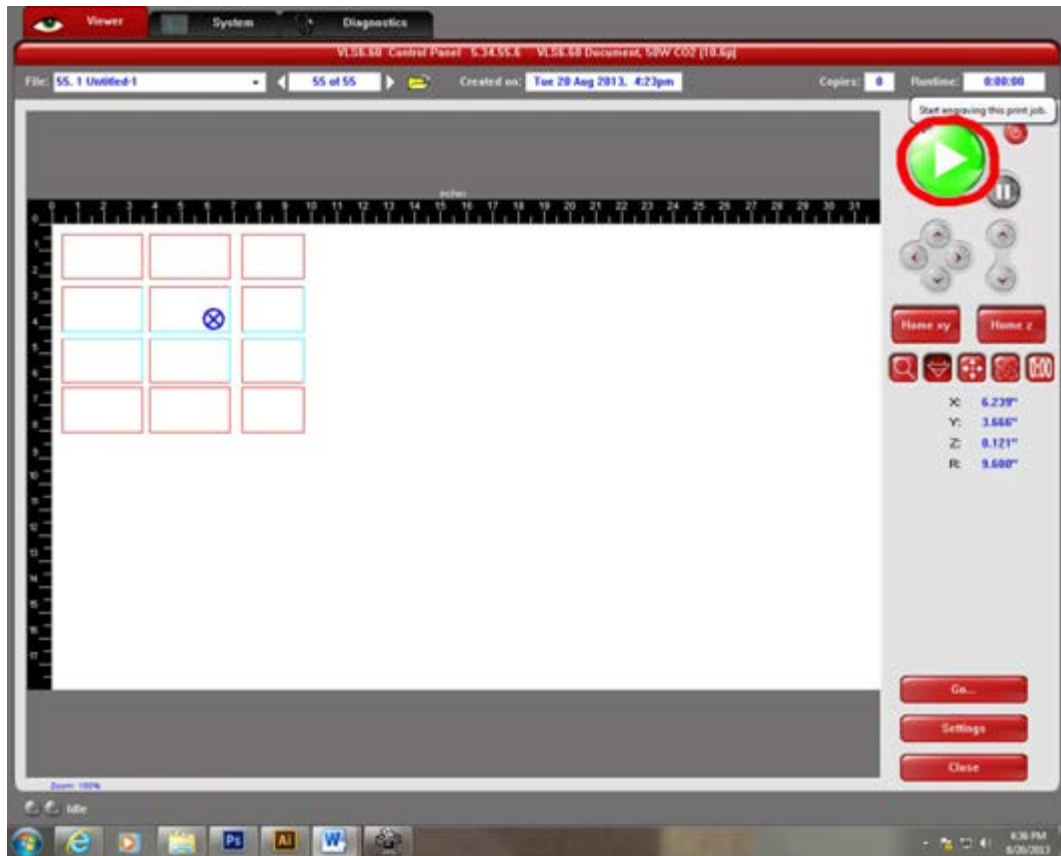
23. Make sure you put the focus tool away and **close the lid**...



CLOSE THE LID!



24. Once you have the lid close, check to see that everything is ok and the **green play button** will appear....press the button and the machine will begin laser cutting your file and material.



25. After your file is done cutting, allow the fumes to evacuate for 30 seconds before opening the lid, and then open the laser cutter machine. **Make sure that you clean up all the leftover materials in the laser cutter machine. Clean up after yourself.**